

WAVES



3D AUDIO ON ANY HEADPHONES



**Nx App for iOS and Android
User Guide**



1 About Waves Nx for iOS and Android

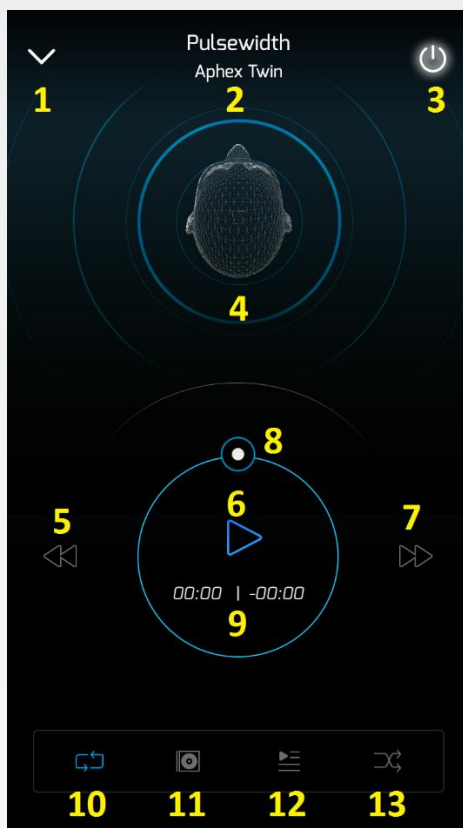
Waves Nx is an application that delivers immersive 3D audio on any headphones. Nx combines the world's highest-quality 3D audio algorithms with state-of-the-art head tracking to deliver 3D audio on music stored in your mobile device's library or streamed from SoundCloud.

For optimal use, use the Nx iOS and Android applications together with the [Nx Head Tracker](#) device.

For more info on Waves Nx products and 3D audio technology, visit www.waves.com/nx

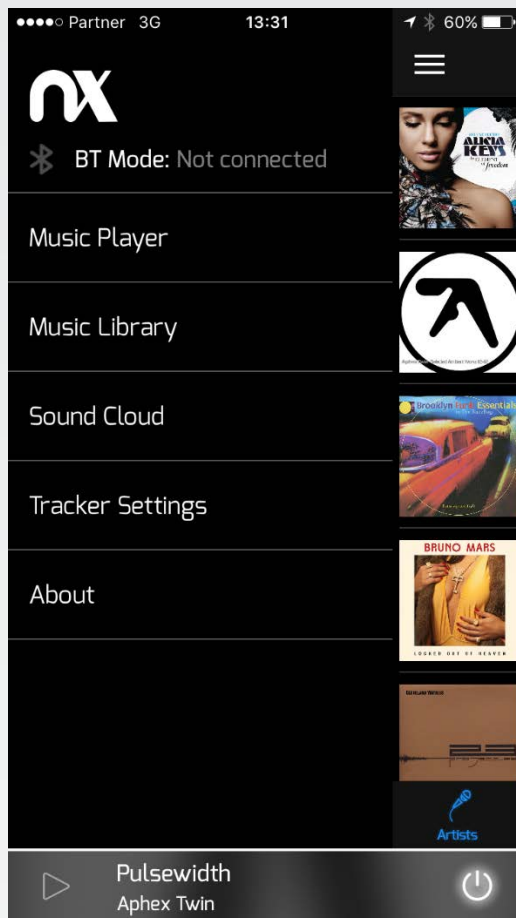
2 Application Screens

Player Screen



1. Minimize player
2. Artist and song name display
3. On/Off – enable/disable the Nx effect
4. 3D head display – displays the tracked head position
5. Play previous song on play queue
6. Play/Pause playback
7. Play next song on play queue
8. Transport seek
9. Time elapsed/time remaining display
10. Repeat mode
11. Switch between 3D head display and album art display
12. Show play queue
13. Shuffle mode

3 Side Menu

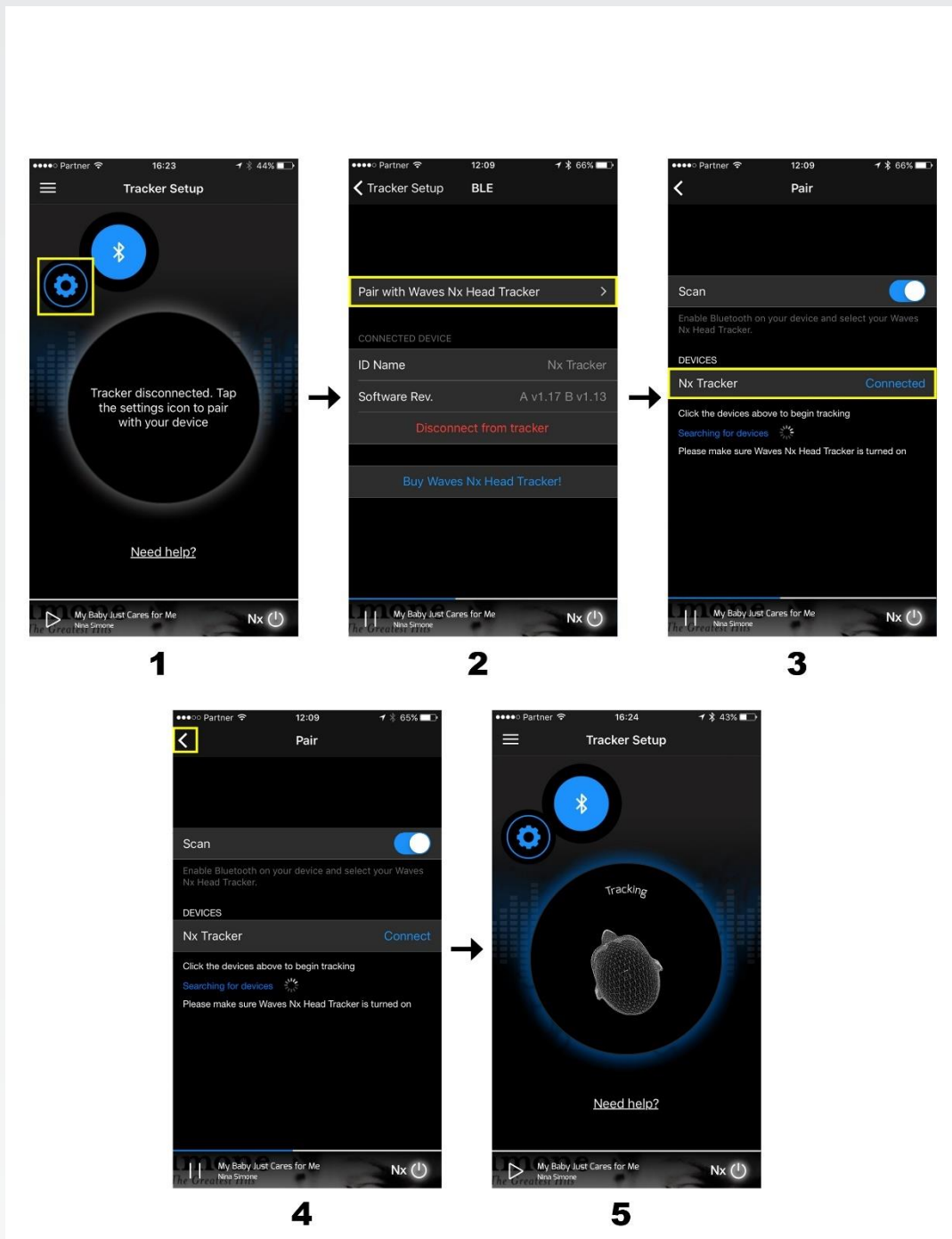


The side menu enables switching between the different application screens:

- Music Player
- Music Library (songs stored on your device)
- SoundCloud streaming content
- Tracker settings – configure head tracking settings
- About

Tracking method and connection status are displayed at the top of the menu.

4 Nx Head Tracker Connection Screens



To connect the Nx Head Tracker device to the Nx application, choose **Tracker Settings** from the app menu, and do the following:

1. Tap the 'Settings' icon.
2. Tap the 'Pair with Waves Nx Head Tracker' arrow.
3. Choose your Nx Tracker device.
4. The Nx Head Tracker is now connected. Tap the 'back' arrow to return to the initial Tracker Setup screen.
5. Attach the Nx Head Tracker to your headset (for instructions on how to do this, see Section 5 of this user guide, under "Attaching the Nx Head Tracker to Your Headphones").
6. Move your head and verify that your movements are mirrored by the animated 3D head onscreen.

5 The Nx Head Tracker

Attaching the Nx Head Tracker to Your Headphones

After you insert a standard AAA battery into the Nx Head Tracker, position the device at the top-center of the headphone arc, with the Nx logo facing forwards (battery in the back). The Nx Head Tracker will not track your head movements properly if you place it off-center or facing backwards.

Wrap the strap around the headphone arc and attach it to the hook on the other side. The strap can be disconnected at both ends for replacement: any standard rubber band can be used if needed.



Button Functions

A short press (under two seconds) in any state will place the unit in advertising mode. In this mode, the device can be detected and paired with your computer. A long press (over two seconds) will place the unit in sleep mode and disconnect it.



Battery

The device works with any standard AAA battery, providing approximately 40 hours of work. Replace the battery through the bottom hatch. The device will go to sleep automatically after a period of time if it is not connected or not moving. In sleep mode, the battery life can last for months.

