

Roland XI-WSG



User Guide

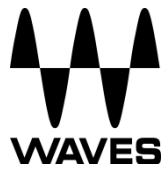


TABLE OF CONTENTS

1. INTRODUCTION.....	3
1.1 ABOUT SOUNDGRID AND THE ROLAND XI-WSG.....	3
1.2 TYPICAL USES.....	4
1.3 NATIVE/SOUNDGRID COMPARISON TABLE.....	6
2. HARDWARE AND CONNECTORS.....	7
3. INSTALLATION AND CONFIGURATION OVERVIEW	8
3.1 INSTALLING THE ROLAND XI-WSG CARD.....	8
3.2 CONFIGURING THE ROLAND XI-WSG IN MULTIRACK SOUNDGRID.....	8
3.3 CONFIGURING THE ROLAND XI-WSG IN SOUNDGRID STUDIO.....	10
3.3.1 <i>Setting up SoundGrid Studio</i>	10
3.3.2 <i>Firmware Status and Updates</i>	13

1. Introduction

Thank you for choosing the Roland XI-WSG audio interface for SoundGrid systems. To get the most out of your product, please take some time to read this guide. We also suggest that you become familiar with our support webpage, <http://www.waves.com/support>, where you will find an extensive answer base, the latest tech specs, detailed installation guides, software updates, and current information about licensing and registration.

1.1 About SoundGrid and the Roland XI-WSG

SoundGrid is a scalable infrastructure that provides a variety of cost-effective, high quality solutions for recording studios. It can be configured in many ways and with many hardware possibilities to provide a very flexible work environment. This framework is managed by the **SoundGrid Studio** application or the **MultiRack SoundGrid** application, which configures the network, assigns and manages I/Os, controllers and servers, and patches audio throughout the system. Any user, anywhere on the SoundGrid network, has access to any of the network's I/O devices. Adding a SoundGrid DSP server enables recording and monitoring with very low latency and moves processing away from the host computer to the server.

The Roland XI-WSG card for Roland consoles enables integration with Waves SoundGrid systems via a single Ethernet cable, allowing live sound engineers to use the SoundGrid networking technology for low-latency plugin processing, multitrack recording and playback, and audio networking.

- Super-low-latency networking platform for processing, playback and recording
- Each card allows 64 channels of bi-directional audio.
- Connects via a single Cat5e or Cat6 Ethernet cable.
- Clock Sync-over-Ethernet for digital splits
- Connects to SoundGrid systems and SoundGrid-compatible devices via a single Ethernet cable.
- Compatible with standard computers and switches.
- Redundancy and recovery options
- ASIO/Core Audio drivers for recording and playback
- Works with MultiRack SoundGrid software for setup and control.
- Networks with all SoundGrid-enabled devices.

The following Roland consoles and mixers are compatible with the Roland XI-WSG:

- M-5000
- M-5000C

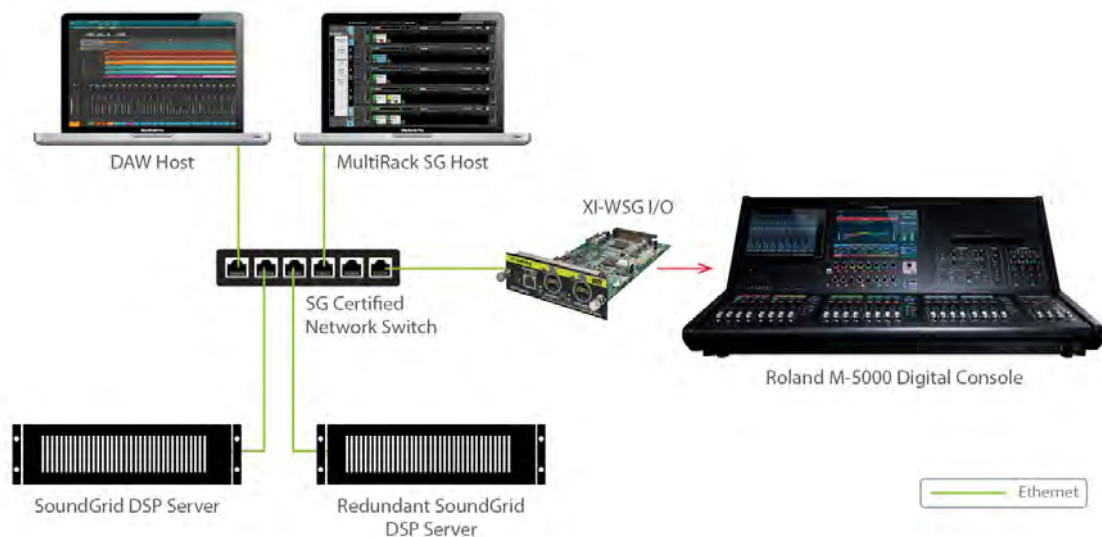
1.2 Typical Uses

The Roland XI-WSG card can be used in both SoundGrid and Native configurations, as follows:

SoundGrid – In a SoundGrid configuration, the Roland XI-WSG card is used in order to connect to a SoundGrid network for plugin processing and simultaneous DAW playback/recording. The SoundGrid configuration uses a dedicated SoundGrid DSP server to power the plugin processing, enabling super-low latency, high plugin counts, and networking capabilities, with the option of an additional backup DSP server.

Please note: A SoundGrid DSP server is required for SoundGrid configurations.

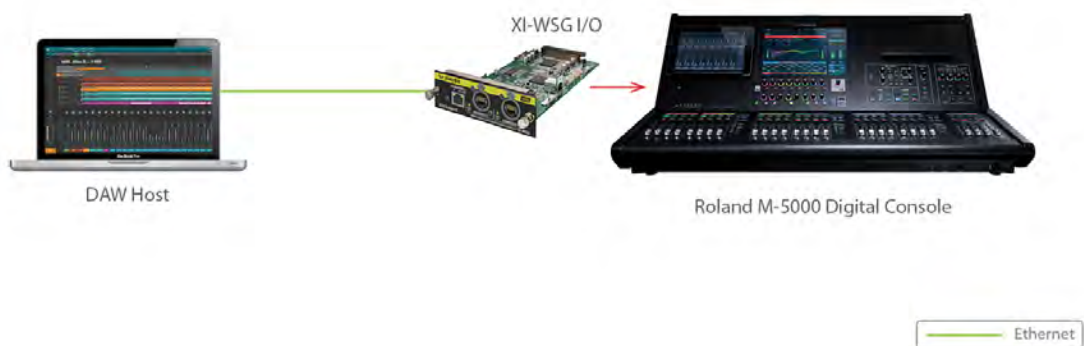
SoundGrid Processing and Recording on Multiple Computers



Native – In a Native configuration, the Roland XI-WSG card is used in order to connect a console to the SoundGrid ASIO/Core Audio driver for plugin processing and/or DAW playback/recording. Since the Native configuration utilizes the computer’s CPU to power the plugin processing, plugin count and overall system latency depend on the computer’s CPU and sound driver capabilities.

Please note: A SoundGrid DSP server is not required for Native configurations.

Native Recording and Playback



1.3 Native/SoundGrid Comparison Table

Features	Native	SoundGrid
Low Latency		✓
Processing	✓	✓
Recording	✓	✓
Simultaneous Recording and Processing		✓
CPU Load	Your DAW computer's CPU	Dedicated SoundGrid DSP server
Backup DSP Server		✓
Networking		✓
I/O Interface	Roland XI-WSG	Roland XI-WSG
Plugin Host Software	MultiRack Native or SoundGrid Studio	MultiRack SoundGrid or SoundGrid Studio
Plugin Licenses	Native	SoundGrid

2. Hardware and Connectors



SoundGrid Ports 1-2 (Ethernet) connect the SoundGrid Network.

Status LED: SoundGrid ports 1 and 2 have a network activity led only.

Only SoundGrid 3 has a Gigabyte connection indicator.

Colors and respective status are as follows:

- SoundGrid Ports 1 and 2
 - Link/Act Led = flashing green
- SoundGrid Port 3
 - Link/Act Led = flashing green
 - GigE (Gigabyte Connection Indicator) = solid orange

3. Installation and Configuration Overview

The ASIO/Core Audio drivers and control panel for the Roland XI-WSG interface are installed using the Waves Central application, which also installs the SoundGrid driver and the SoundGrid Studio Application required for DAW recording and playback.

Download Waves Central here: <http://www.waves.com/downloads/central>

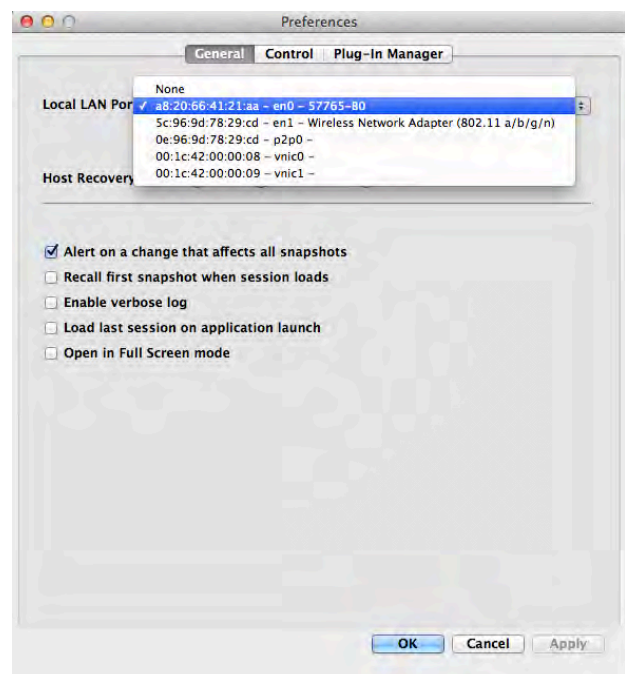
3.1 Installing the Roland XI-WSG Card

Please refer to your Roland manual for card installation instructions.

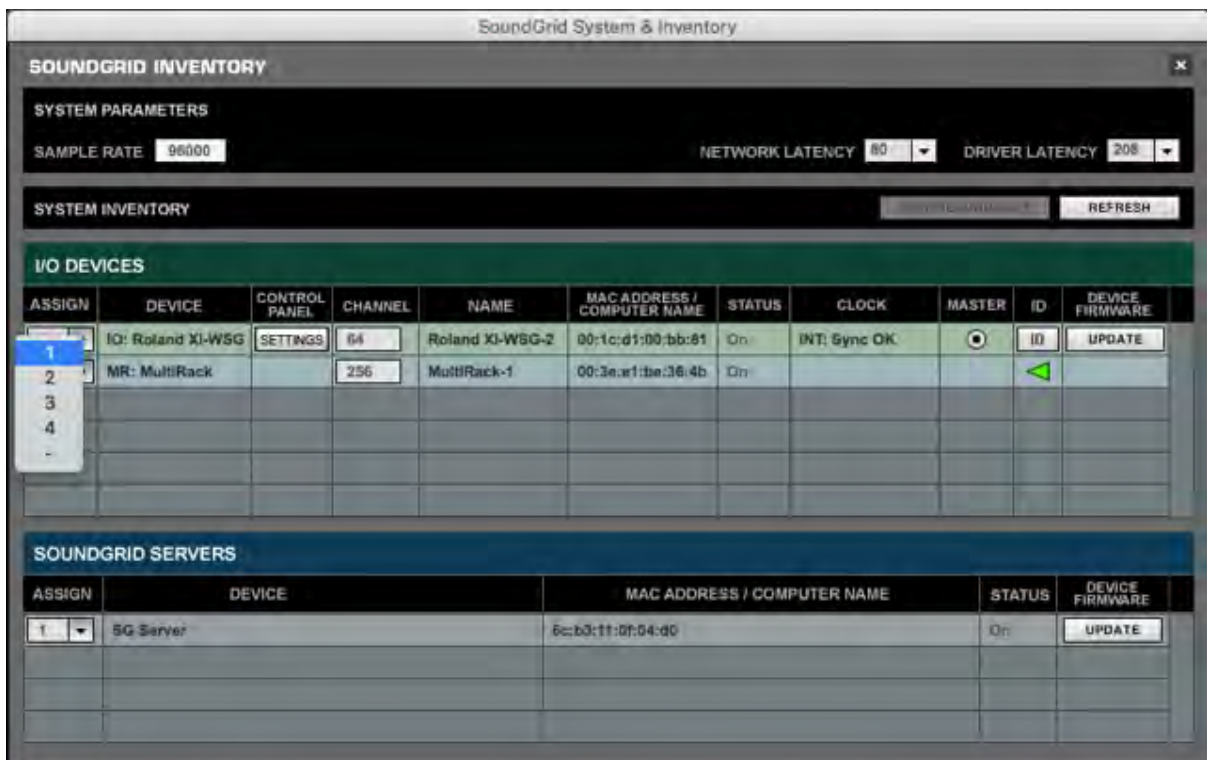
3.2 Configuring the Roland XI-WSG in MultiRack SoundGrid

Configure the Roland XI-WSG card in the Inventory window of MultiRack SoundGrid.

1. Launch the MultiRack SoundGrid application.
2. Enter the Preferences window by typing Ctrl+P (Windows) or Cmd+ (Mac), or from the appropriate application menus.
3. Under Local LAN Port, choose the adapter connected to the SoundGrid network and the Roland XI-WSG audio interface. Network adapters are displayed as MAC addresses and port names.
4. When you select the correct port, the message “SoundGrid Network Found” will appear on the panel. Close this window.



5. Open the SoundGrid Inventory window from the Audio Menu (F2). The SoundGrid Inventory window displays all SoundGrid I/O devices connected to your network.
6. Assign SoundGrid drivers in the Assign column. Use consecutive numbers for multiple devices, with the first unit assigned as number 1.
7. Assign SoundGrid DSP servers in the Assign column. The primary SoundGrid DSP server will be assigned as number 1. If you are using a redundant SoundGrid DSP server, assign it as number 2.



8. Assign your Roland XI-WSG SoundGrid card/s in the Assign column. Use consecutive numbers for multiple devices, with the first unit assigned as number 1.
9. Click on the ID button to activate LEDs on the card.
10. The Update button updates the card's firmware.

For **Native Configurations** please refer to the Waves SoundGrid Studio System User Guide.

3.3 Configuring the Roland XI-WSG in SoundGrid Studio

This is a quick overview of what you need to know about SoundGrid Studio software to get your network up to speed. There's enough here to configure a simple network, assess network status, and set up your I/O devices. For more complex configurations, please refer to the SoundGrid and SoundGrid Studio user guides.

3.3.1 Setting up SoundGrid Studio

The SoundGrid Studio Application oversees the SoundGrid network and manages all network devices. To maintain network effectiveness, the SoundGrid Studio Application is always running in the background. Bring SoundGrid Studio to the front by clicking on the SoundGrid icon in the Mac Top Bar or the Windows System Tray.



When SoundGrid Studio opens you will see the **System Inventory** page.



The first time you launch SoundGrid Studio, the wizard will open. It scans the network, inventories its assets, and then configures the devices. If the wizard does not start automatically, click the Start Auto Config button, which is next to the network port.



Choose "Next" to start automatic configuration. This will take a few moments. Choose "CANCEL" to configure manually.



If the wizard cannot locate the requested SoundGrid network devices, this means the devices might be off or not connected properly. In such a case the Wizard will allow you to rescan the network or work as Driver node slaved to another system. For more information please refer the SoundGrid Studio User Guide.

When configuration is complete, close the window. If there is still a problem, you can configure your system manually. Use the system Inventory page to assign devices, control the network, and manage clock. To learn how to use this page, please refer to the user guides for SoundGrid Studio and StudioRack.

The first device added to a rack is designated as the Sync-over-Ethernet clock master and is placed in the first rack slot.

A populated device slot displays the mode, clock status, and sample rate of the I/O. The clock master device is indicated by its blue color and the icon text: On, Master Clock, INT (48 kHz).



To add another SoundGrid device, click on the arrow in an empty rack slot. From the list of available devices, choose the one that you want to add—in this case, a second Roland XI-WSG card. In this image, Roland XI-WSG is grayed out (and therefore unavailable), since it is already claimed.

The new device is visible in the rack slot. Unless changed by the user, it remains the clock slave and is colored green.

Use the same menu to change the assignment of clock master from one device to another, or to remove the device from the rack slot.



Now you know how to assign I/O devices and designate a device as the clock master. Click on the **Gear** symbol in the device slot to open the Roland XI-WSG Control Panel in order to set up clock details and configure preamps.

2.3.2 Firmware Status and Updates

On the left of the device icon are two buttons:

FW indicates the status of the device's firmware. The user is given the choice to update it. Status indications are color-coded:

Gray Compatible firmware

Blue Compatible firmware, but a newer version exists

Red Firmware not compatible and must be updated.



Click on the **FW** button to launch the Reflasher. This will initiate a scan of the hardware and then offer options. Do not disconnect the device or turn off the computer until you see "Done."

ID activates LEDs on the front panel of the hardware device.