

Using DiGiCo SD Consoles with a NETGEAR JGS516 v2 Switch

To use your SD console with a NETGEAR JGS516 v2 switch, some network setting on your console must be modified.

There are three steps to this procedure:

1. Disabling ReadyOn
2. Modifying the Network Settings
3. Enabling ReadyOn

You must complete all three steps in the correct order.

Step #1 – Disabling ReadyOn

The operating system on your SD console is protected by ReadyOn. Unless ReadyOn is disabled, any changes made to the system (including Network and Display Settings) will be lost when the SD Console is switched off.

Important note: Connect a working overview monitor to the console for this procedure or it may become disabled after ReadyOn is re-enabled. (Does not apply to SD7)

If you wish to try this procedure before committing to the changes, leave ReadyOn enabled and skip to Ste #2. Changes can then be made and the system proved, without these changes being permanent.

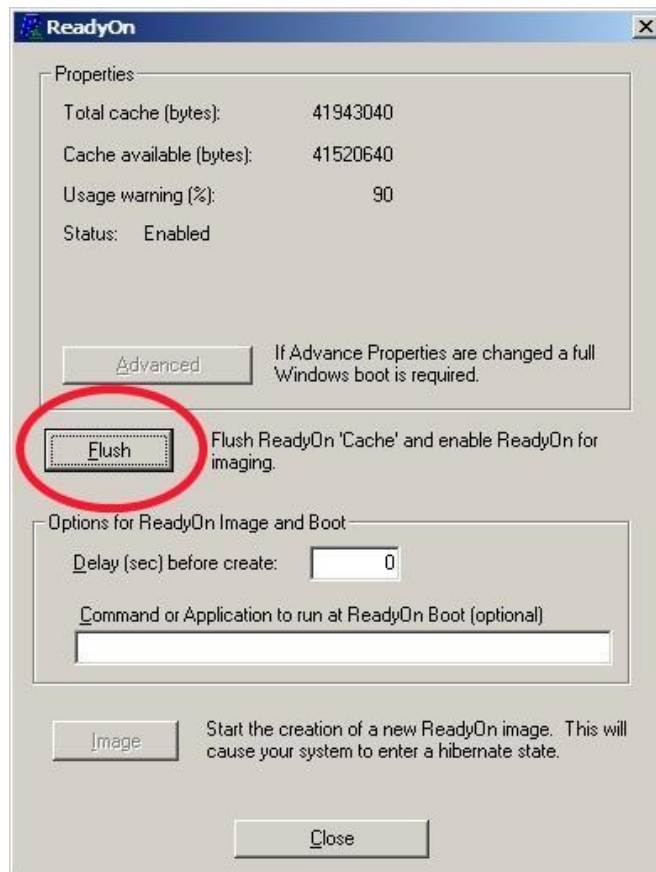
If you are in the mixer application, quit to Windows:

SD7 - System > Quit to Windows.

Other SD models - press **[Alt]+[F4]**.

Right-click on the Start button and select **Explore**.

Go to **C:\Program Files\Ardence\ReadyOn**, and run **ReadyOn.exe** The following window will show:



Click on the **Flush Button**, as indicated above. The following progress bar will appear. Once Flushing is complete, close ReadyOn.



Step #2 - Modifying the Network Settings

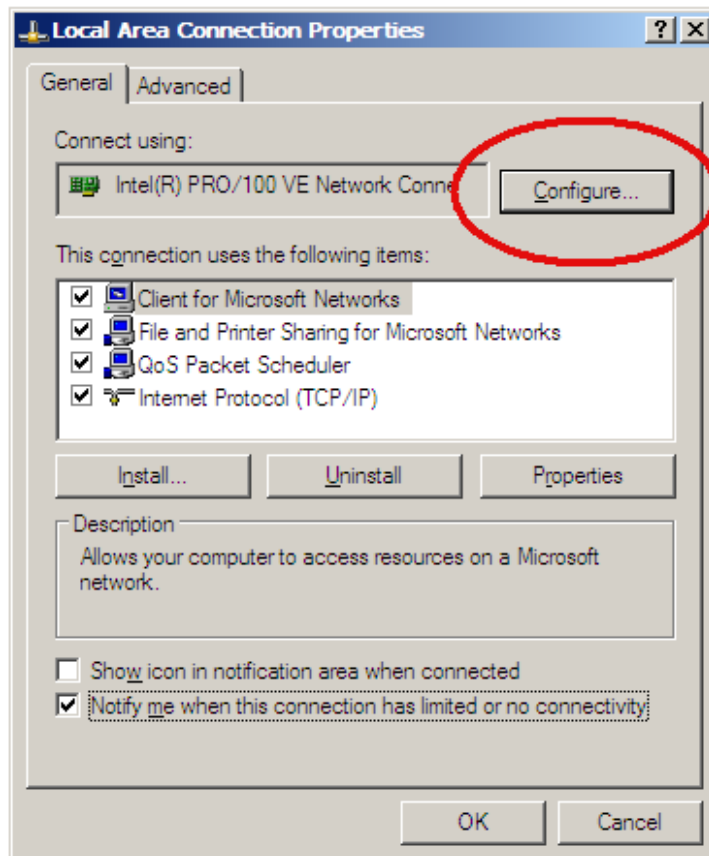
The following changes must be made to the LAN port settings of your SD console:

Right-click on the **Start button** and select **Explore**.

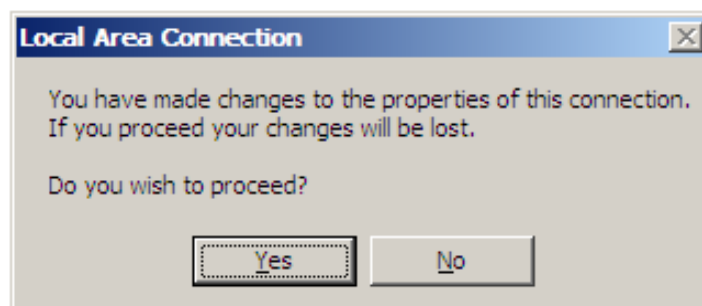
Go to **Control Panel > Network Connections**.

Right-click on **Local Area Connection**, and select **Properties**.

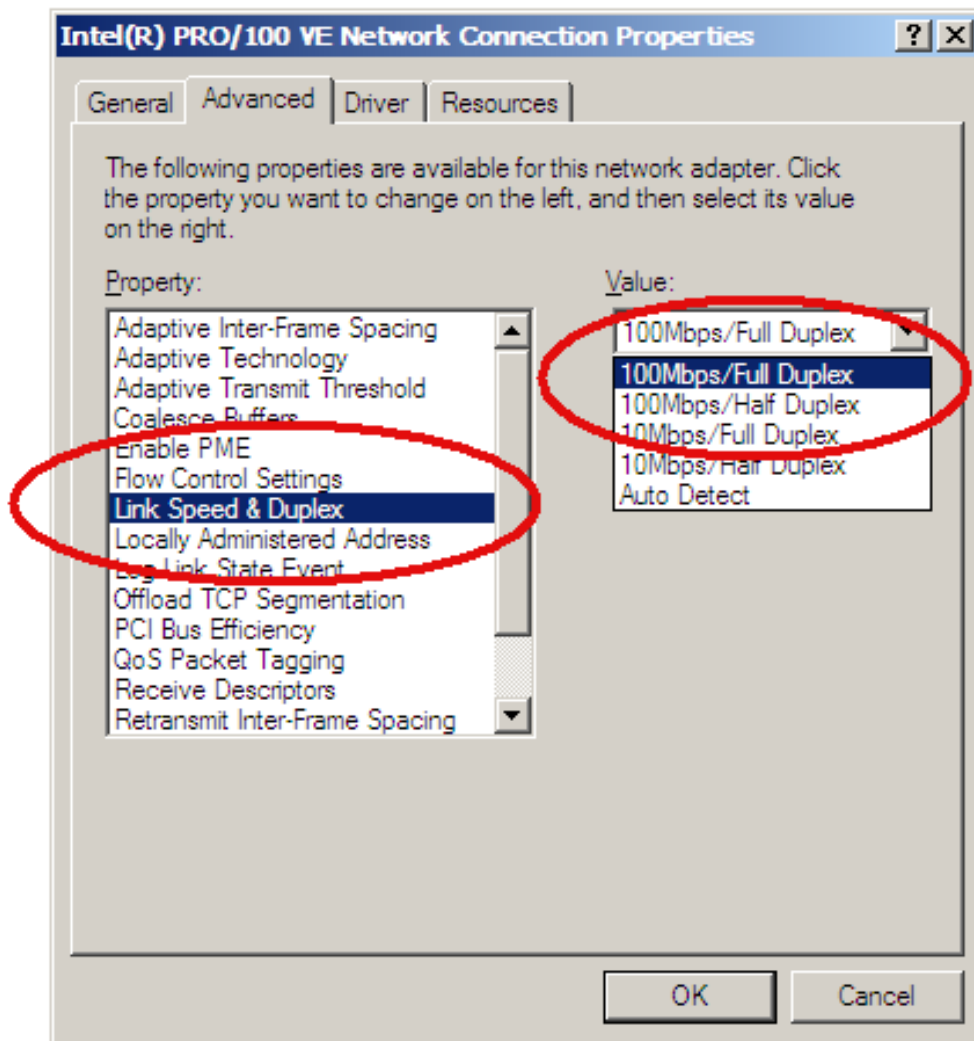
In the window that opens, click on **Configure** as shown in the picture below.



When you click **Configure** the following warning message may appear. Select **Yes**.



In the Intel® Pro/100 VE Network Connection Properties Window that opens, under **Property** select **Link Speed & Duplex**, and set its **Value** setting to **100Mbps/Full Duplex**.



Click **OK**.

Important Note: If mirroring mixers, engines must be set to the same Link Speed & Duplex value (i.e. **100Mbps/Full Duplex**).

If the IP address is to be changed, this can be done at this point under Internet Protocol (TCP/IP). Refer to the mixer user manual for the limits on the range available. There is normally NO reason to change this setting and doing so can prevent all network operation.

Step #3 - Enabling ReadyOn

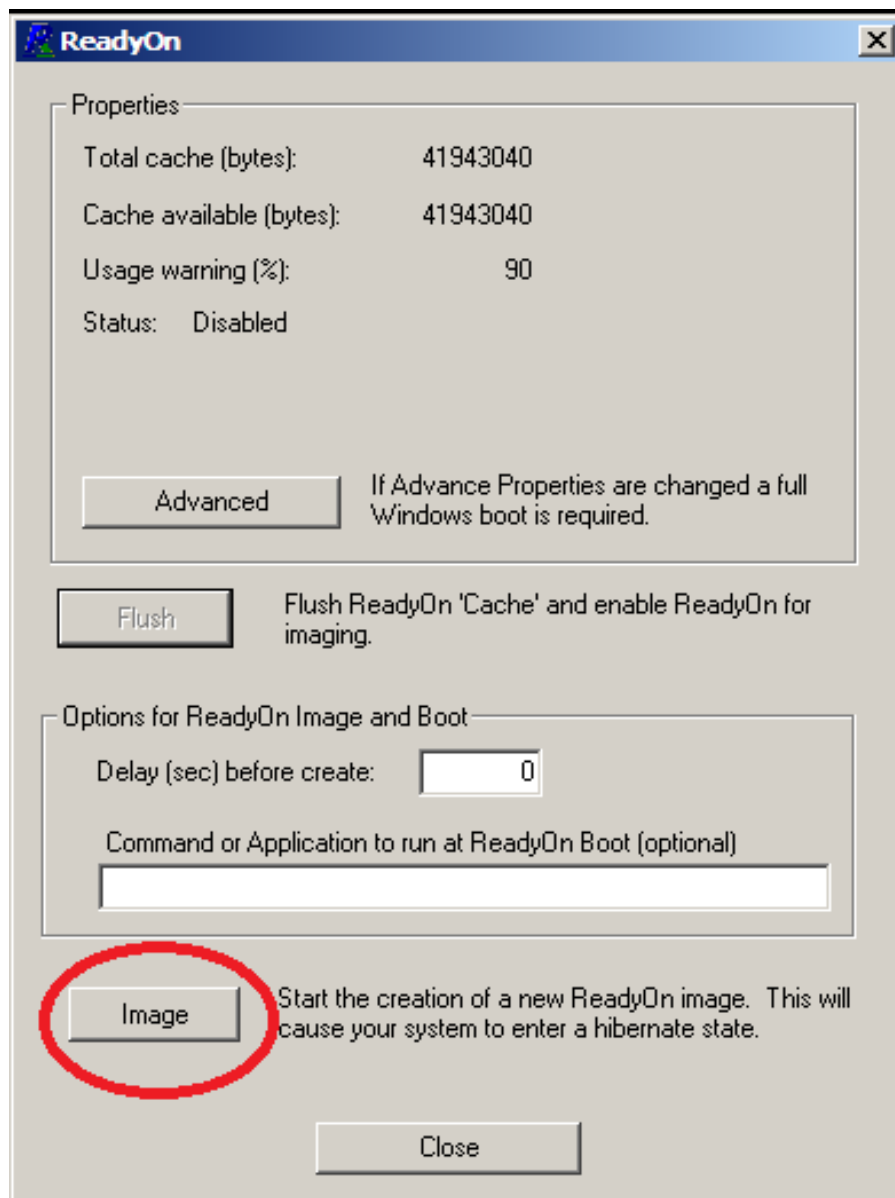
Right-click on the **Start** button and select **Explore**.

Go to **C:\Program Files\Ardence\ReadyOn** and run **ReadyOn.exe**.

Close any Explorer windows that are open behind the ReadyOn window, so that the only window open on the screen is the ReadyOn window as shown below.

Click the **Flush** button.

In the "Command or Application to run at ReadyOn Boot" field, type the following path:
SD7 – **D:\SD7\SD7.exe**
Other SD models – **D:\SDX\SDX.exe** (replace X with the SD model number)



Click on **Image**. The screen should show the System Hibernating.

NOTE: IF THERE IS AN ERROR MESSAGE AT THIS POINT, OK the error and close the ReadyOn program.
Quit and restart Windows(Start button > Turn Off Computer). The console will restart and then halt at the Windows desktop (the network settings will not be changed by this restart).
Now repeat the above procedure starting from **Step #3** onwards.

Once completed this procedure and the system has hibernated, turn the console power off.
You can now Power the Console back on, and proceed as normal.

NOTE: There are 2 lights on the console's Network Interface Card (Except for SD7 where these are internal) After this modification, the orange light should be permanently lit to indicate the presence of a 100Mbps connection. The green light will flash to indicate network activity. Minimum requirement for a remote PC network adaptor is 100Mbps.