

Installing the Waves SoundGrid Driver on a DiGiCo SD12 Console

Follow these steps to install the Waves SoundGrid driver:

1. Unzip the “Waves SoundGrid Driver” file and save the resulting folder to a USB key.
2. Plug the USB key into the console.
3. Disable HORM and run "Double Click to Install.bat."
4. When the install is complete re-enable HORM and save an image.
5. Restart the console.

If you are unfamiliar with HORM, please read the following article before you begin the installation.

Introduction to HORM

HORM - **H**ibernate **O**nce **R**ead **M**any is a Windows 7e function— equivalent to Ready On, which is used on the older SD-series consoles that were based on Win XPe. Both HORM and Ready On protect the C: drive from unintended changes, but there are practical differences between the old and new systems.

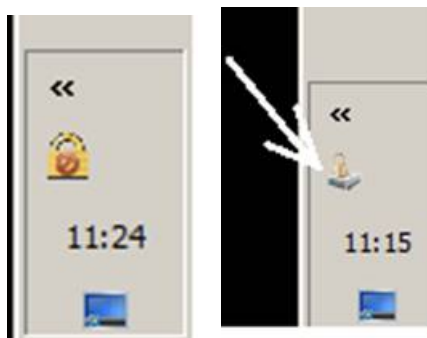
The main difference that is HORM does not present a command line at console startup, which prompts the user to launch an application. This means that even with HORM disabled, the SD12 application will still start automatically—this cannot be avoided.

In the event of a corrupted startup.ses file that prevents the console from starting up correctly, hold the SHIFT key as soon as you see the SD12 logo appear on the Master screen. You will have the option of a “Default Start.”

Using the HORM System

Quit the mixer application to configure the HORM system: Touch “Quit to Windows” under the System button.

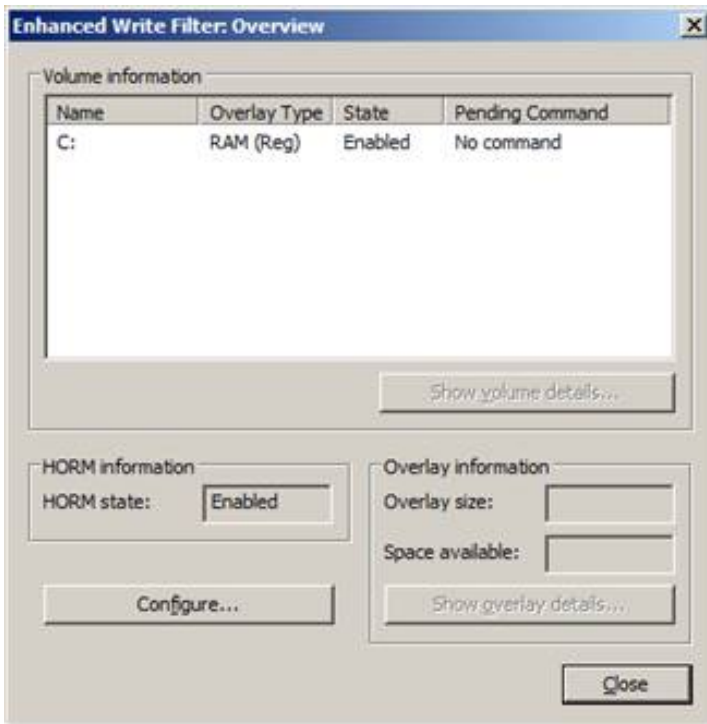
To open the program, double-click the HORM icon in the tool bar.



The image on the left shows the HORM icon when the application is active and the drive is locked (normal use).

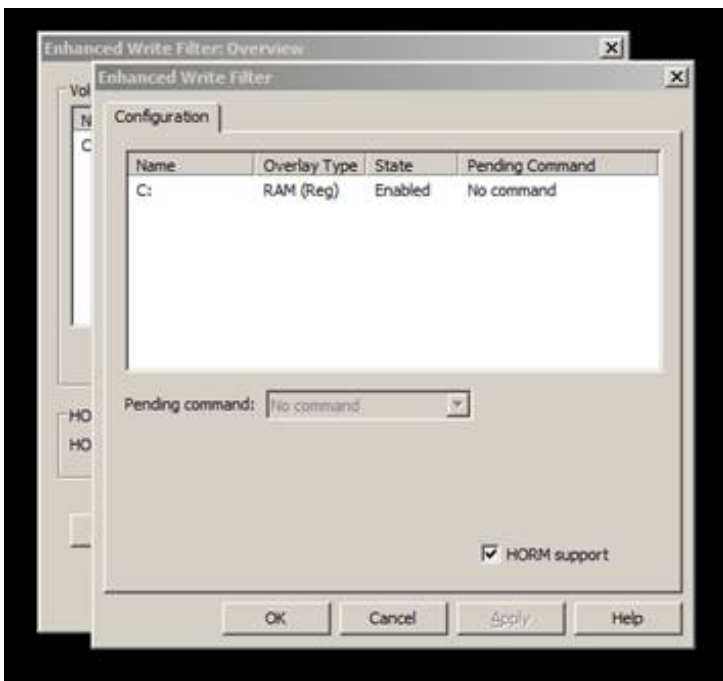
On the right, HORM is available and the drive is not locked.

Once open, the HORM application window looks like this:



Note that the HORM status should ALWAYS be indicated as “Enabled,” whether HORM is active or not.

Clicking “Configure” opens this window:

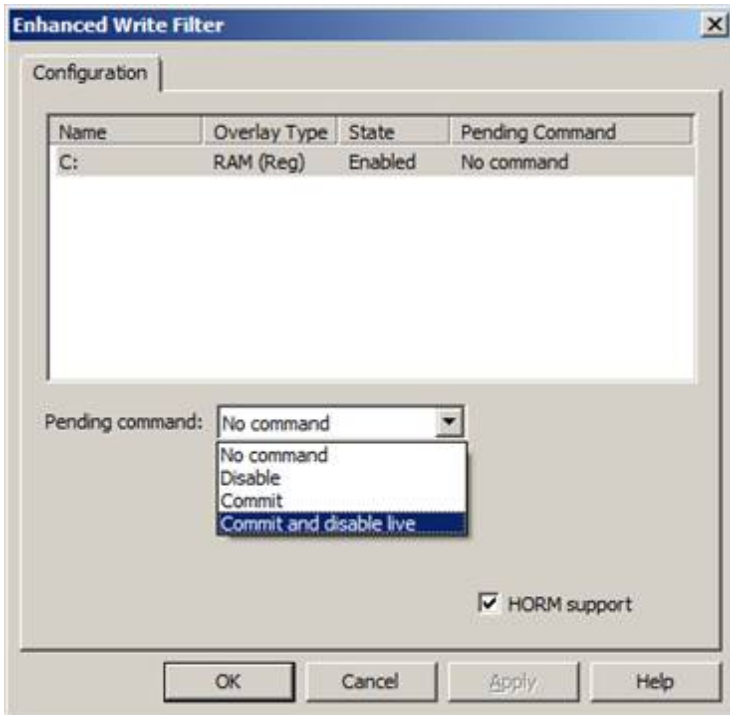


Note: “HORM Support” (bottom of page) must ALWAYS be checked.

Disabling Protection

Normally, protection is on. To disable protection:

1. Click on the "C:" drive in the Configuration window.
2. Click on the "Pending Command" drop-down box. Select "Commit and disable live."
3. Click "Apply" and then "OK."
4. Close the remaining window.



Protection is now disabled and adjustments in the operating system can be made.

Enabling HORM

To clear the HORM system before re-saving and to check that settings are correctly saved, follow these steps.

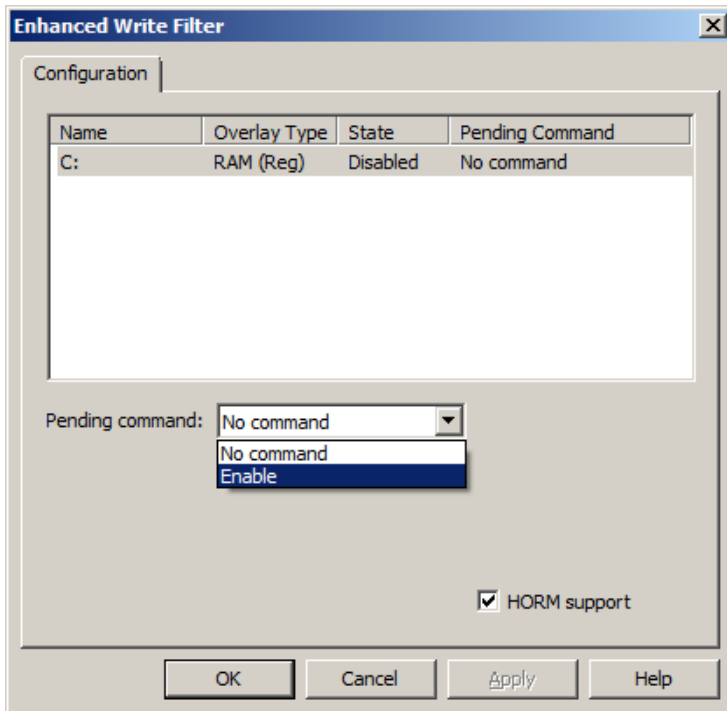
1. Click on the Start button and close Windows as normal.
2. Power cycle the mixer.
3. Observe the mixer program start. Confirm the startup screens appear to work as expected.
4. As above, quit to Windows and restart the HORM program from the tool bar icon.



The HORM icon should indicate that protection is not active

HORM is the first window to open (note that HORM is always shown as Enabled).

5. Click on Configure as before.



6. Highlight the C: drive (note its state is now “Disabled”).
7. Click on the “Pending Command” drop-down menu and note the options. Select “Enable.”
8. Click “Apply” and then “OK.”
9. Close the window.

Saving HORM Image

To create the HORM image and save it correctly:

1. Click on the Start button and quit Windows as normal.
2. Power cycle the mixer.

When Windows restarts, the HORM “image” will be in place in and the system will be protected. This can be confirmed by checking that the Windows Tool Bar icon is now displaying the locked symbol.